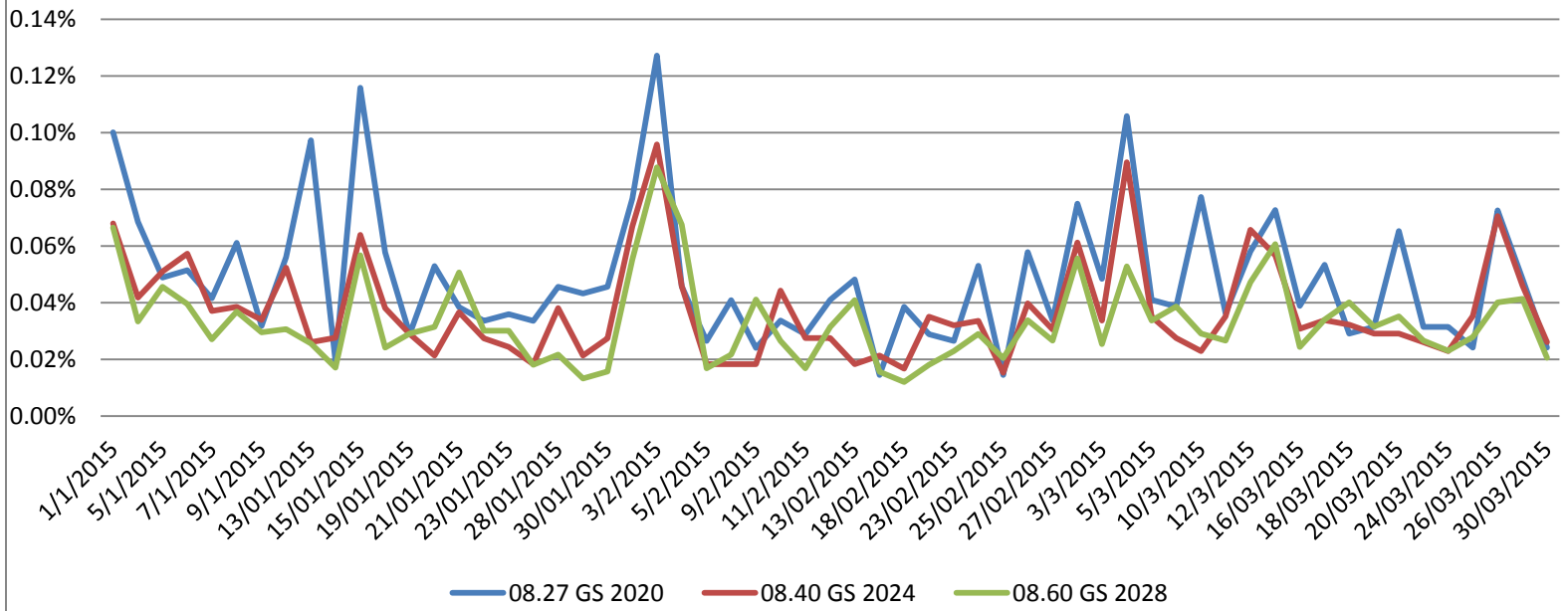
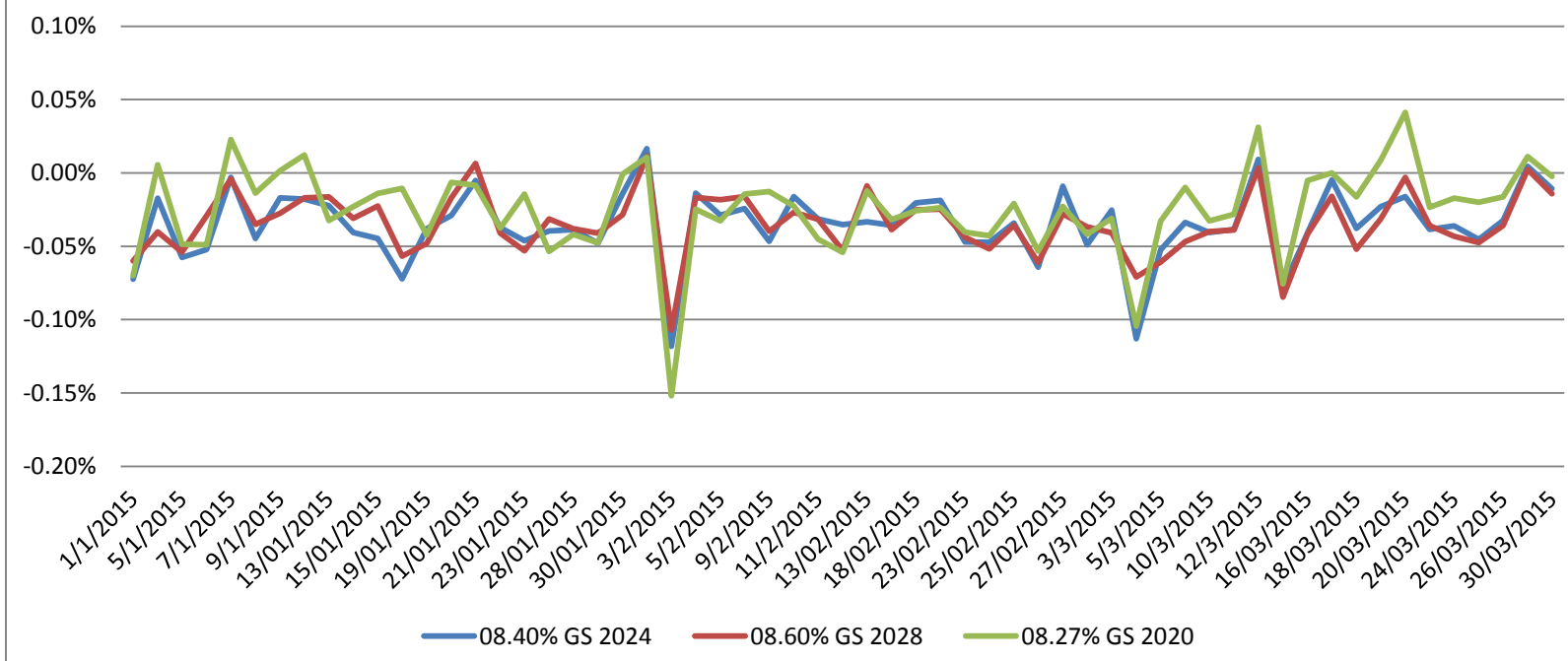


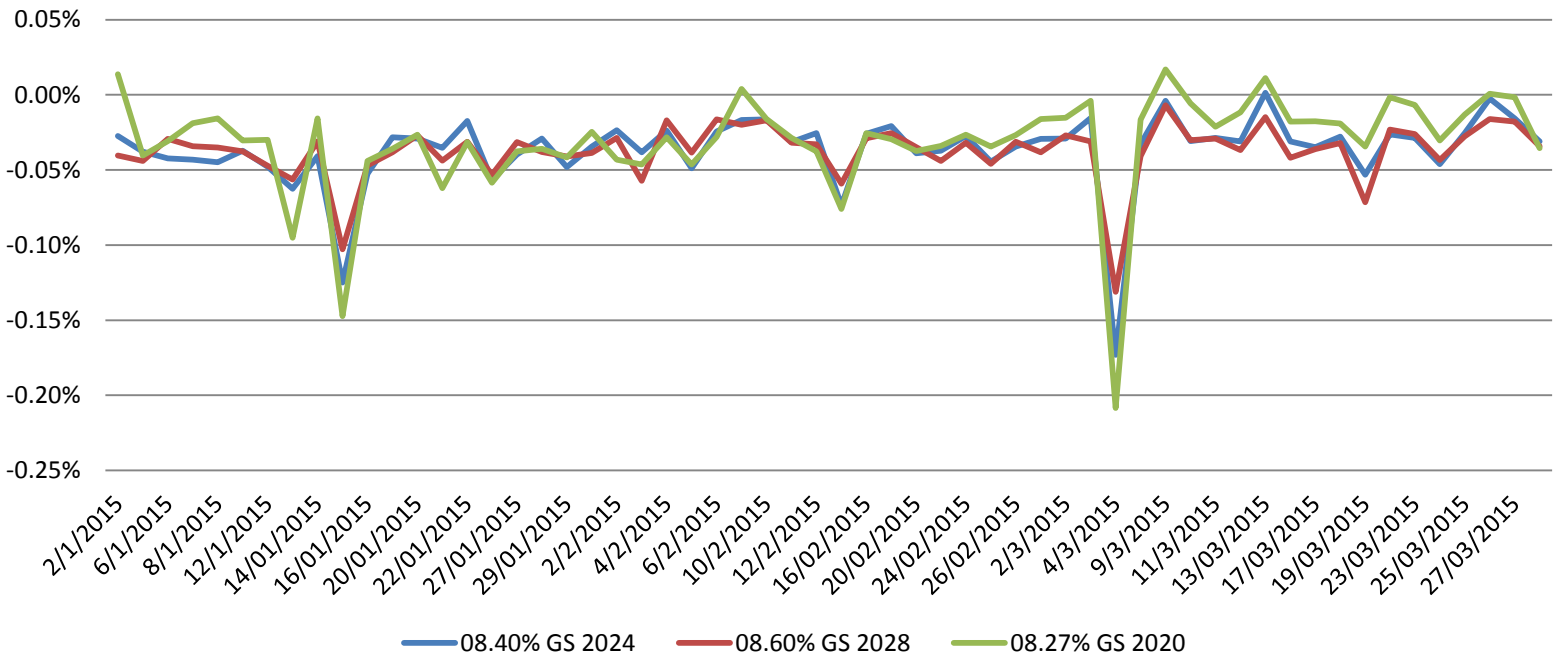
Difference of High and Low Yield From 1 Jan 2015 to 31 March 2015



Same Day Open & Close From 1 Jan 2015 to 31 March 2015



Next Day Open & Previous Day Close From 1 Jan 2015 to 31 March 2015



NOTES :

- 3-Feb-15 Bonds and rupee fell after the central bank held interest rates steady on 3rd Feb but reduced the statutory liquidity ratio or the amount of bonds that lenders must set aside, by 50 basis points.
- 4-Mar-15 Repo rate reduced by 25 basis point to 7.5%
- 13-Mar-15 CPI was high at 5.7 % in feb compared with 5.1 % in Jan